

LCC Modelling System

B 70-19 Iron and brick bridge

**All drawings are not in scale.
Some proportions on drawings may differ from reality.**

For additional elements for modification and extension please visit our website at www.lcut.co.uk or email us at contact@lcut.co.uk

Total width: 152mm, Road width: 107mm

Deck level: 137mm

Inner clearance: 123mm high in middle, 93mm high on the sides and 163mm wide

Bundle contains:

- 4x LCC 70-76
- 4x LCC 70-77
- 4x LCC 70-78
- 1x LCC 70-81
- 2x LCC 70-87
- 4x LCC 70-88

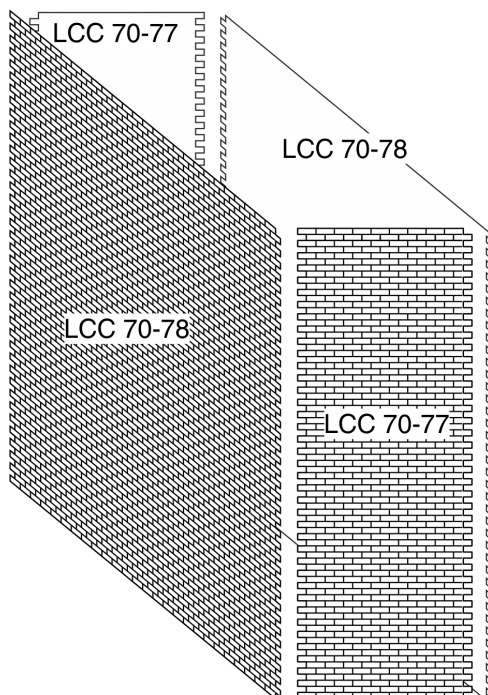


We recommend PVA or any other paper/wood glue for the main fibre board parts and resin based glue for 3D printed parts if present.

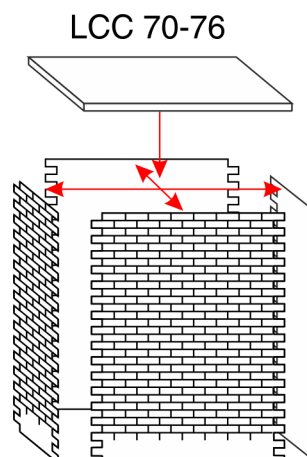
Painting recommendation:

We recommend using acrylic or enamel paints. There is no need to undercoat the surface but it can be done if desired. The material used is porous and relatively forgiving, heavy coats are unlikely to flood the brickwork. If you experience any warping in the material leave it to fully dry and then gently bend it back into shape. Always test any paints in an area that will not be seen or on spare parts/off cuts.

PIERS AND POSTS

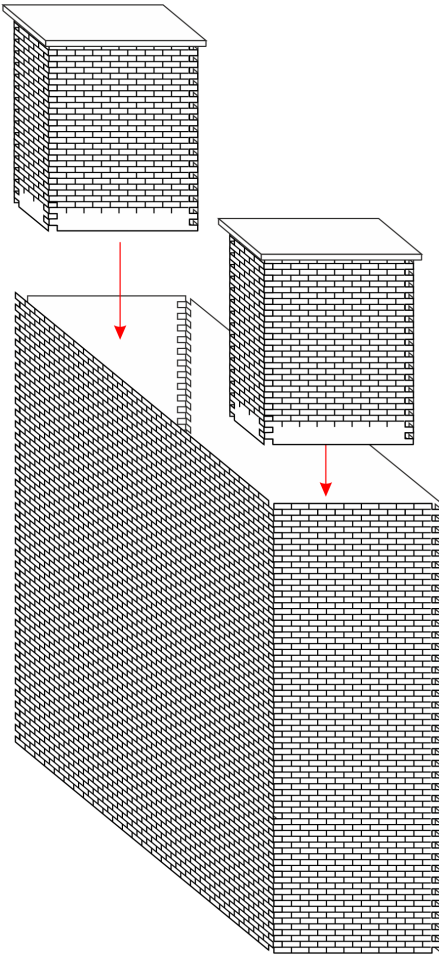


Apply glue in between the element's interlocking bricks. Push parts at a right angle to each other. If desired use a square to help align the parts at the right angle.

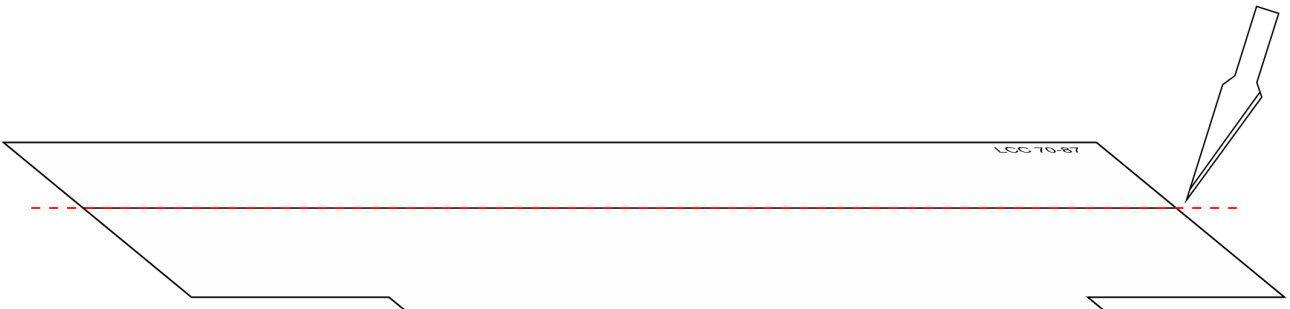


PIERS AND POSTS CONTINUED

Insert posts into the pier making sure that they are aligned well. Misalignment at this stage can cause the parapet to not register correctly to the pier.



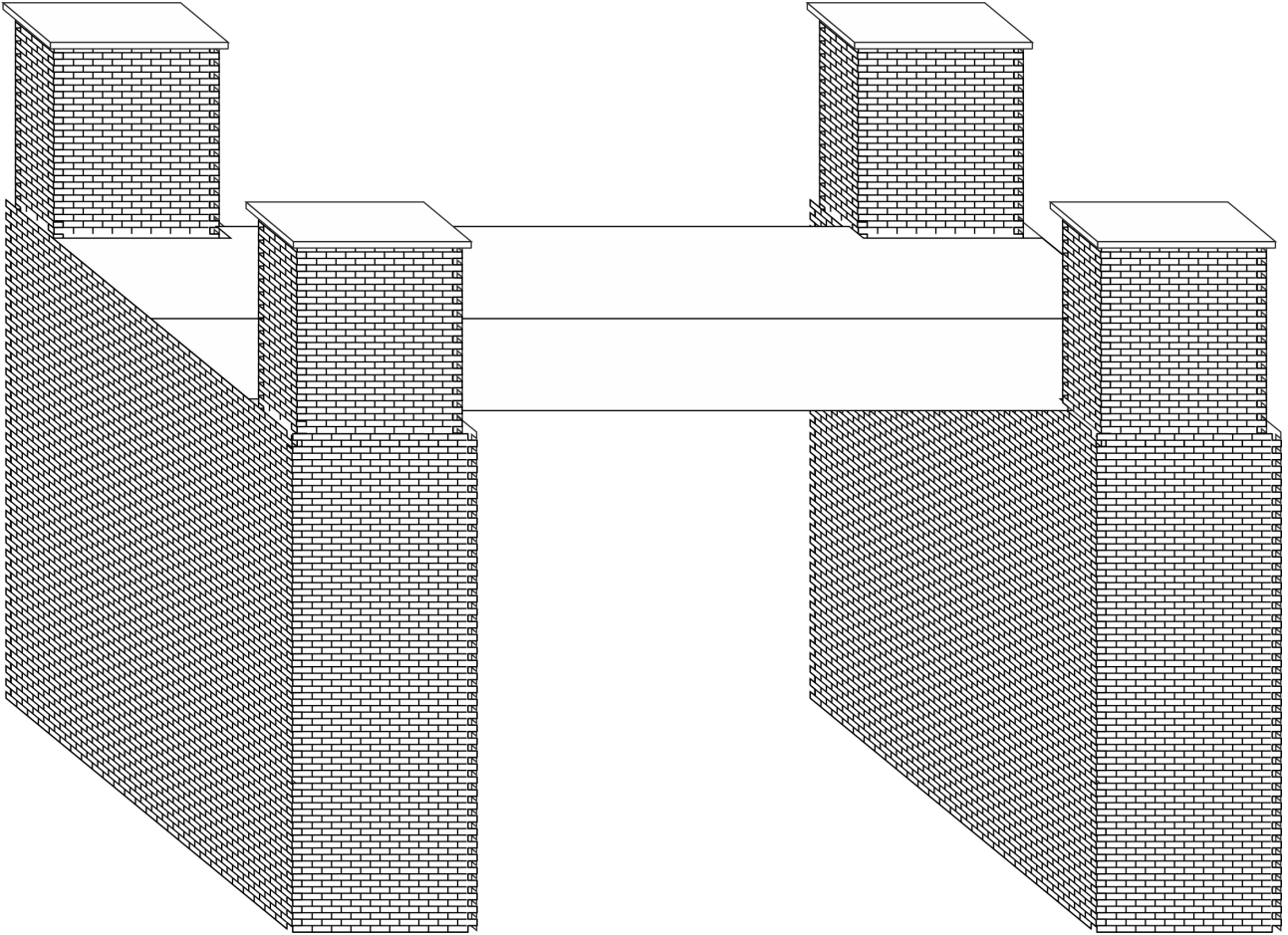
DECK



Cut both deck panels LCC 70-87 along the marked line for the single version of the bridge.

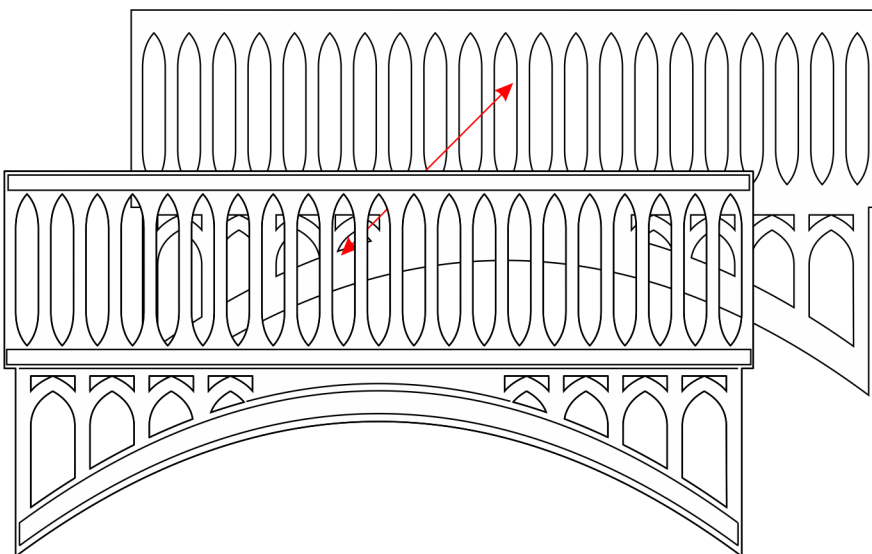
DECK CONTINUED

Glue the first deck element to the piers thus joining two piers together. The deck was designed to be a very close fit and it is normal for it to be slightly reluctant to locate in place. Apply gentle force to push the second deck element into place but be careful not to strip bricks off the posts. If the deck is too tight trim off some material from the inner seam.



IRONWORKS

LCC 70-88



Glue two LCC 70-88 together back to back to create the both ironworks assemblies. Make sure to align both elements precisely.

IRONWORKS CONTINUED

Fit the ironworks in between the posts making sure they register to the piers without any gaps. In some cases the ironworks will seem to be too long. All of the parts have been designed to be a really tight fit and gentle force may have to be used to gently locate them in place. Finish the build by gluing LCC 70-81 to the top of the ironworks.

